

# Plated metal foil by FUKUDA

Taking advantage of electric plating technology accumulated through copper foil surface treatment, we can plate hereto metal onto various kinds of metals among all copper. The Plating adds several properties such as cosmetic, anti-rust, anti-wearing etc.

## Base Foil

foil to be plated. Various kinds, width, thickness would be available upon request

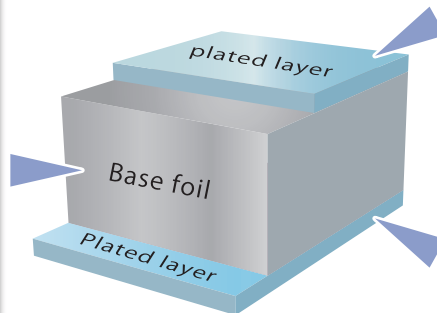
### Standard material for base foil

<b>Copper</b> density 8.93	<b>Aluminium</b> density 2.70	<b>Nickel</b> density 8.90
----------------------------------	-------------------------------------	----------------------------------

### Variation

various kinds of material according to need

<b>Copper</b>	<ul style="list-style-type: none"> <li>ED foil・RA foil</li> <li>Unique type (particular crystalline orientation, high purity, very low profile)</li> </ul>
<b>Nickel</b>	
<b>Aluminium</b>	<ul style="list-style-type: none"> <li>Pure Aluminium (#1000s)</li> <li>Alloys (contact to us for more details)</li> </ul>



## plated layer

Plated layer onto base foil has high thickness accuracy due to electro plating.

### Standard material for plated layer

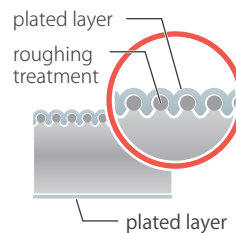
<b>Tin</b> melting 232°C	<b>Nickel</b> melting 1450°C	<b>Copper</b> melting 1083°C
--------------------------------	------------------------------------	------------------------------------

### Variation

Partial plating is also available.

- Plating on single side  
Non plated side is surface of base foil.
- Patterned plating  
plating on only area needed

### moreover...



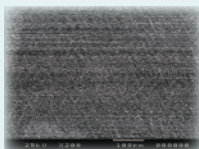
Roughing treatment on a base foil is available.

Some combinations are not available. Please contact our sales persons for more details.

## Product examples (including developed products)

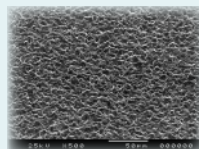
### NICKEL PLATED ALUMINUM

for application requiring light weight and high heat resistance



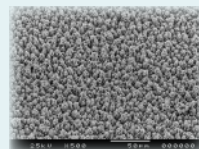
### TIN PLATED ALUMINUM

for application requiring light weight and high corrosion resistance



### NICKEL PLATED COPPER

for conductivity under high temperature and rigorous environment



### TIN PLATED COPPER

for application requiring long storage time.

